

Figure 1
Total Suspended Solids From all Standard Stormwater Sampling Locations on the Emory and Clinch Rivers
TVA - Kingston

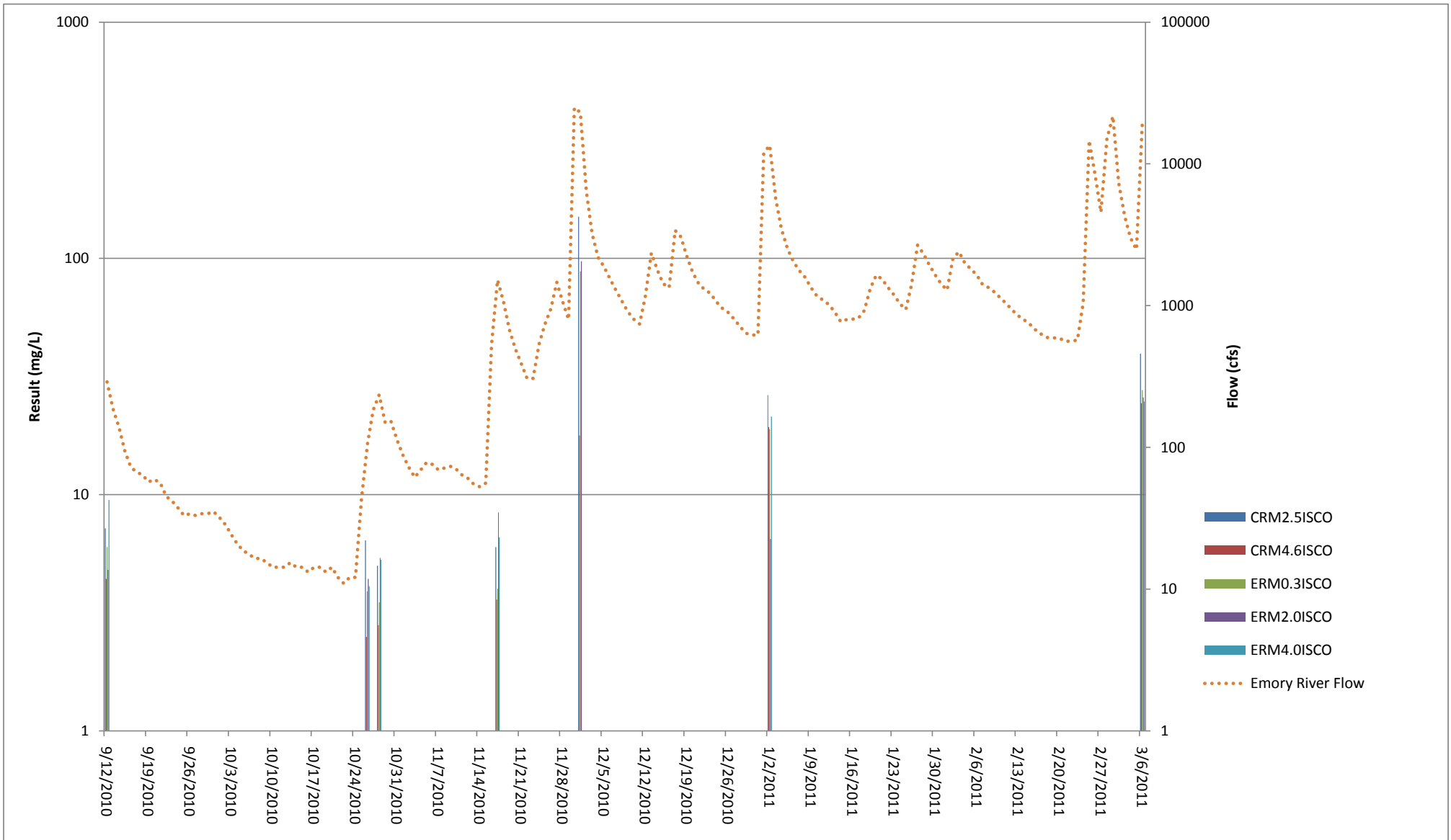
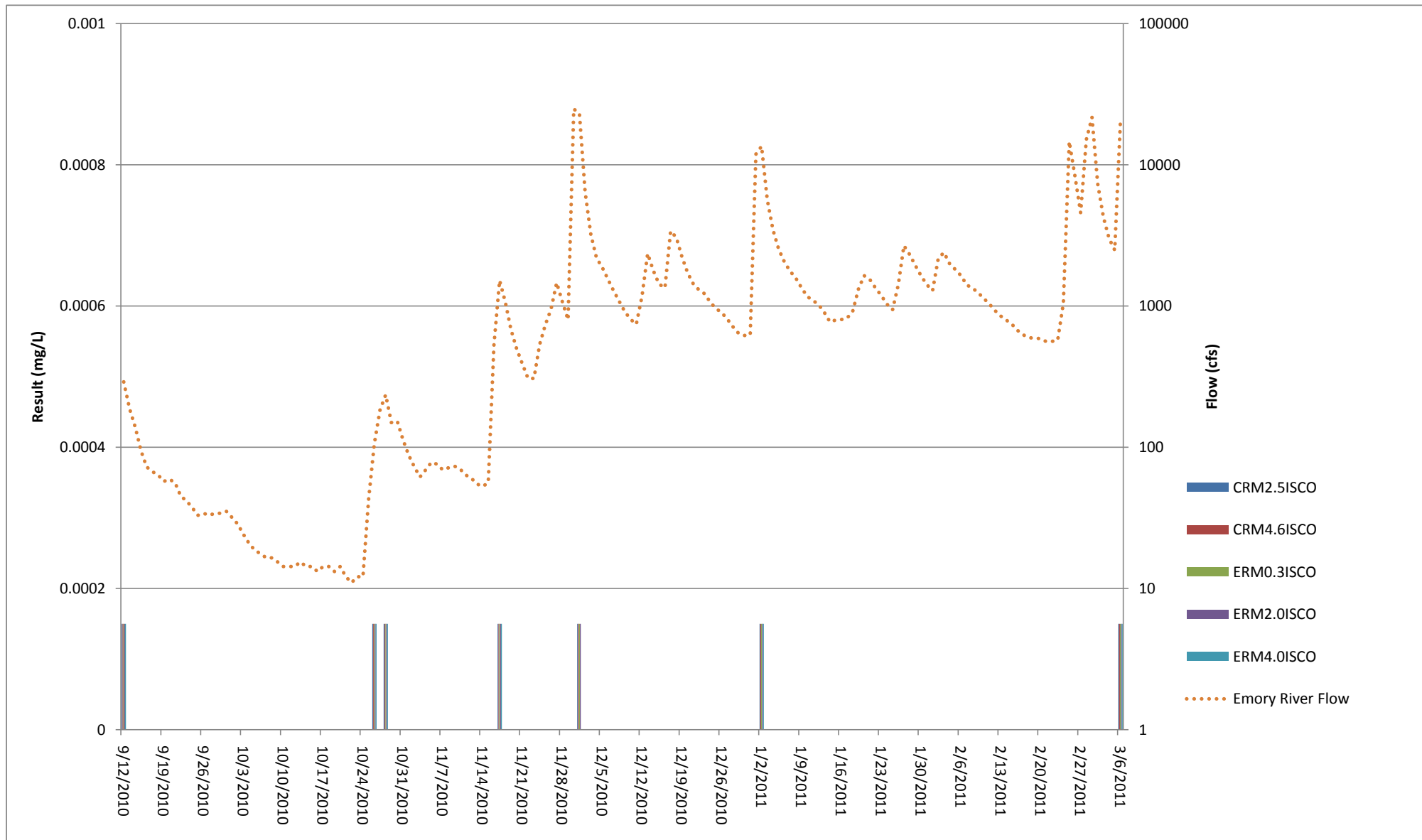


Figure 3b
Total Mercury From all Standard Stormwater Sampling Locations on the Emory and Clinch Rivers
TVA - Kingston



Results are reported at the lowest concentration that laboratory instruments can reliably measure (detection limit).
 All results are non-detect at the detection limit.

Figure 2b
Total Arsenic From all Standard Stormwater Sampling Locations on the Emory and Clinch Rivers
TVA - Kingston

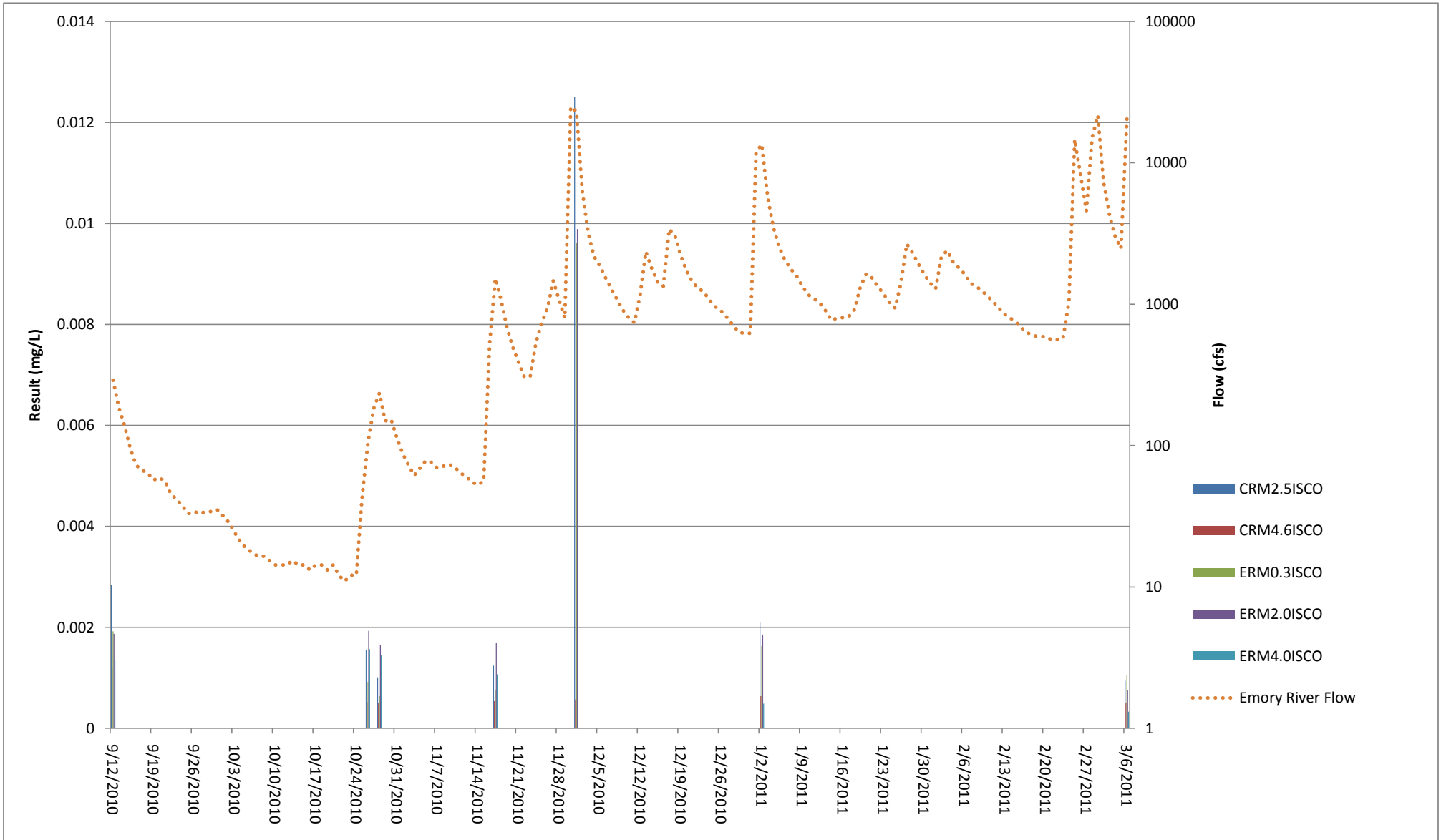


Figure 4a
Dissolved Selenium From all Standard Stormwater Sampling Locations on the Emory and Clinch Rivers
TVA - Kingston

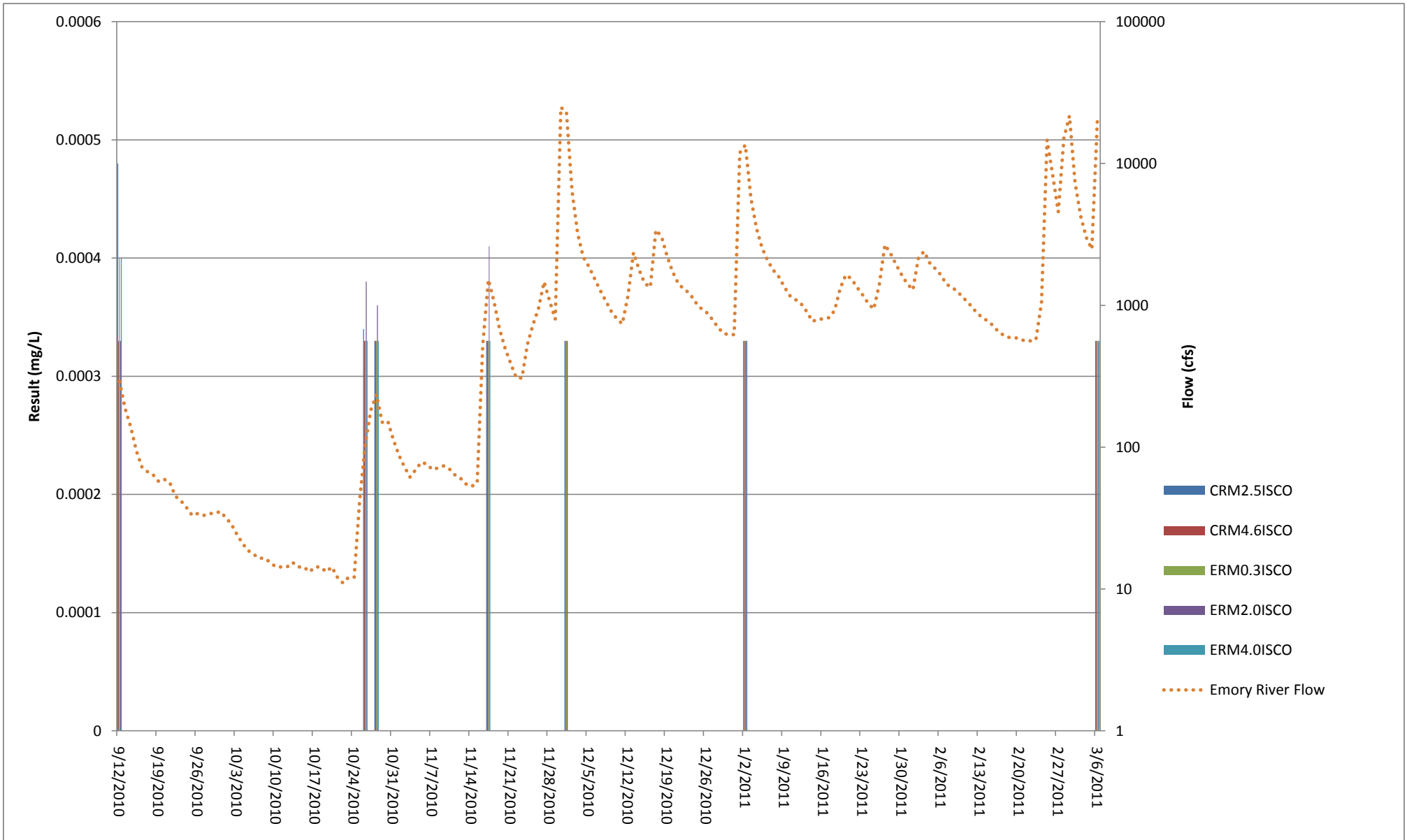
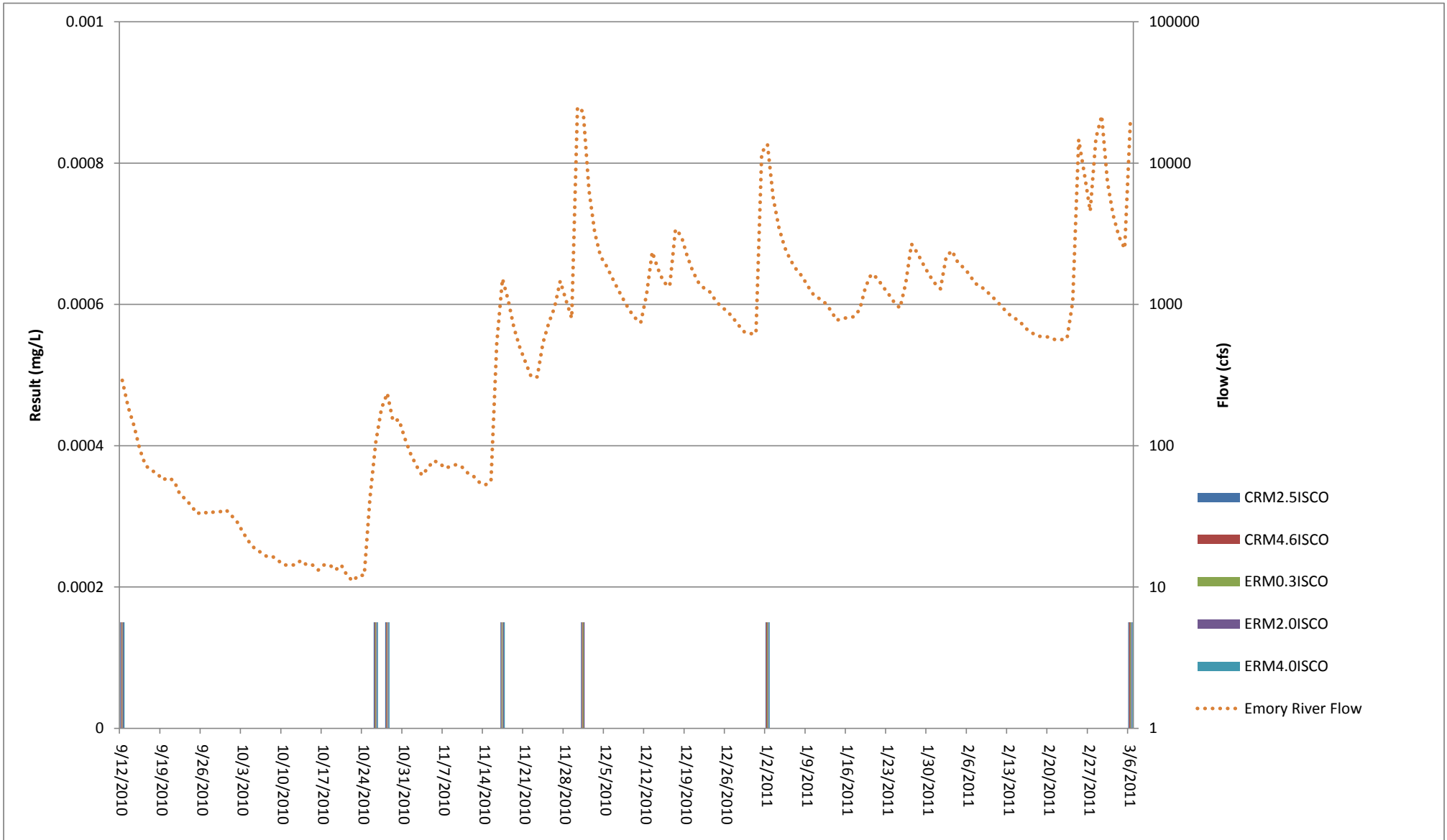
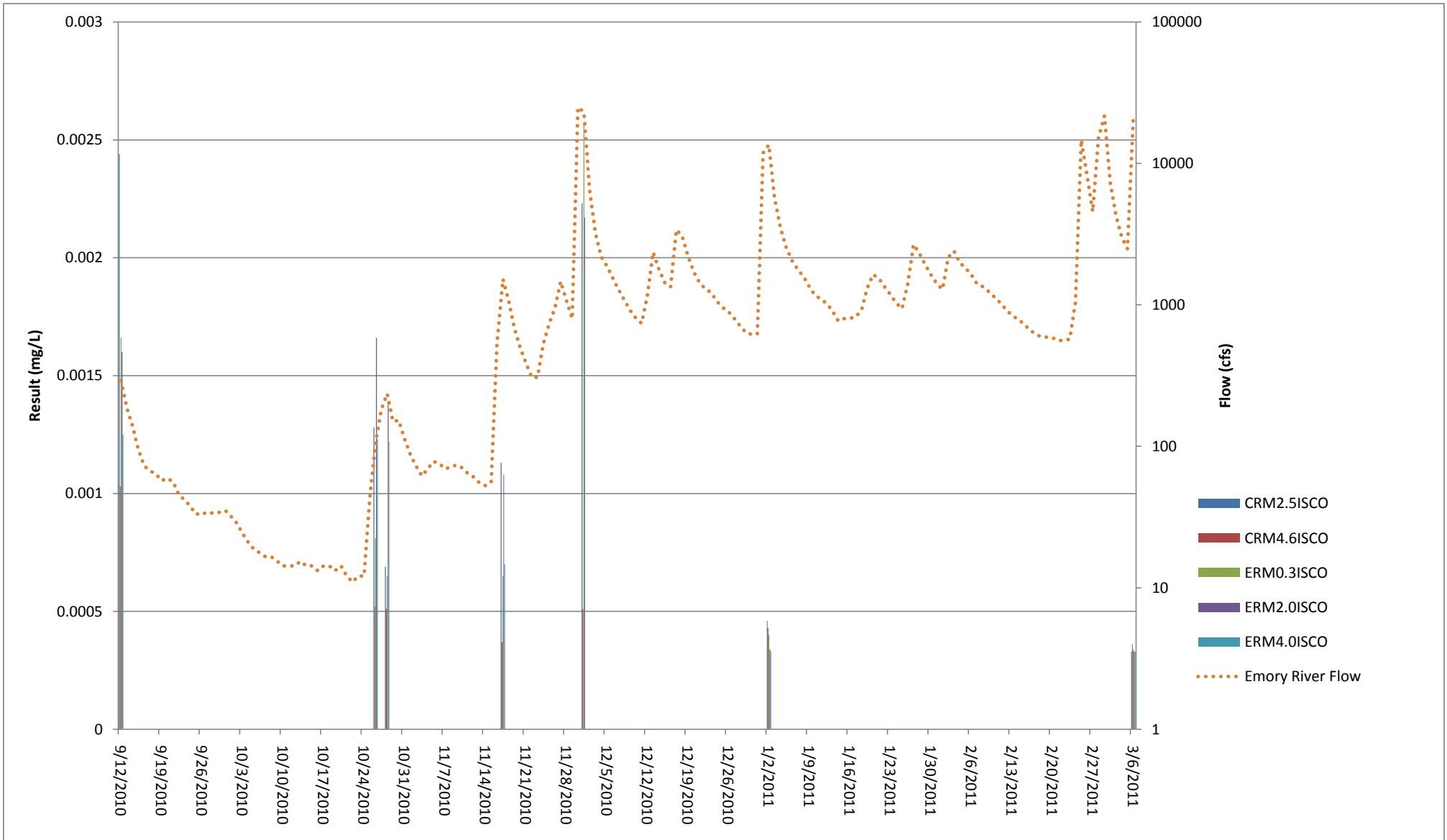


Figure 3a
Dissolved Mercury From all Standard Stormwater Sampling Locations on the Emory and Clinch Rivers
TVA - Kingston



Results are reported at the lowest concentration that laboratory instruments can reliably measure (detection limit).
 All results are non-detect at the detection limit.

Figure 2a
Dissolved Arsenic From all Standard Stormwater Sampling Locations on the Emory and Clinch Rivers
TVA - Kingston



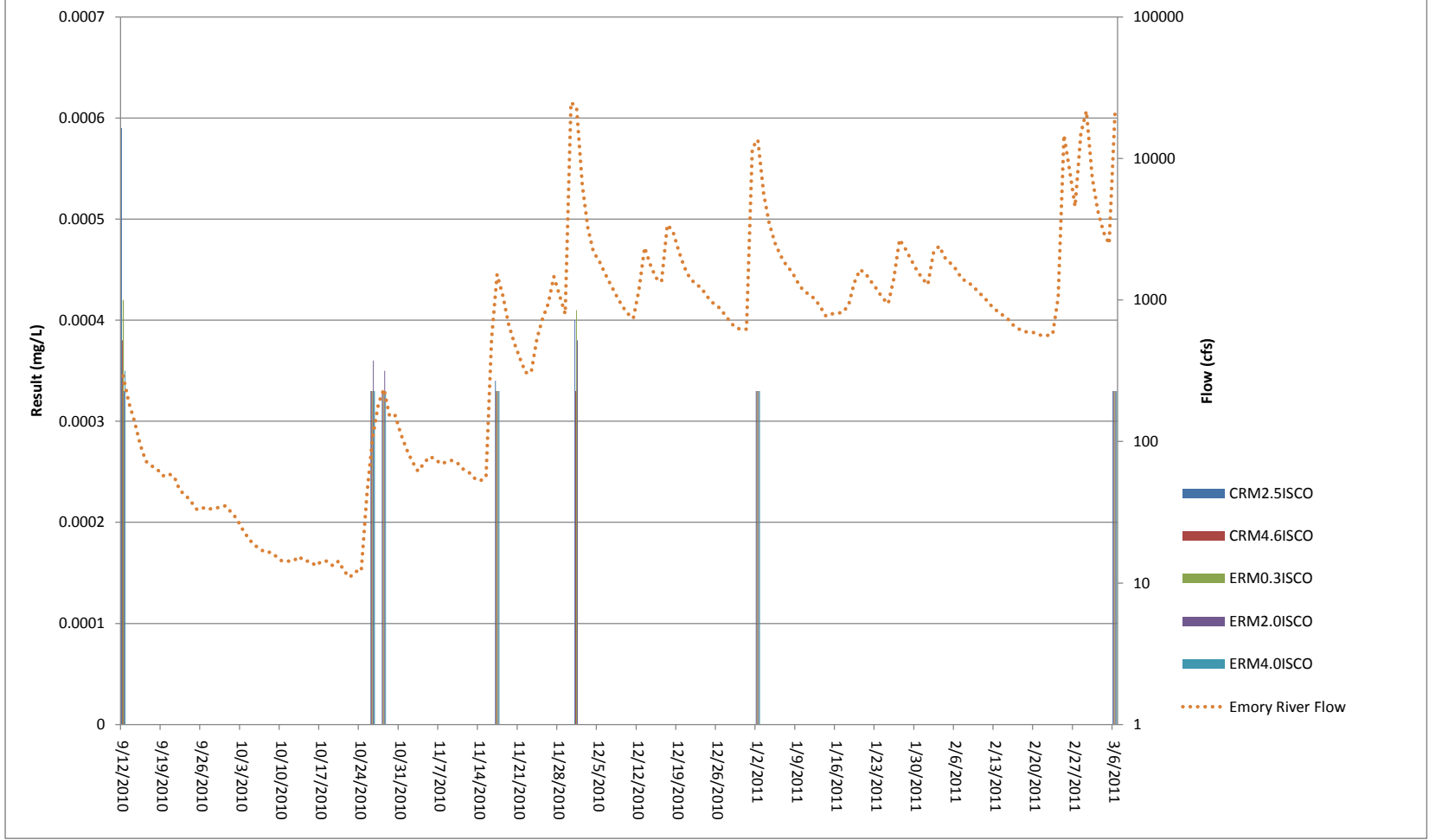


Figure 2a
Dissolved Arsenic From all Standard Stormwater Sampling Locations on the Emory and Clinch Rivers
TVA - Kingston

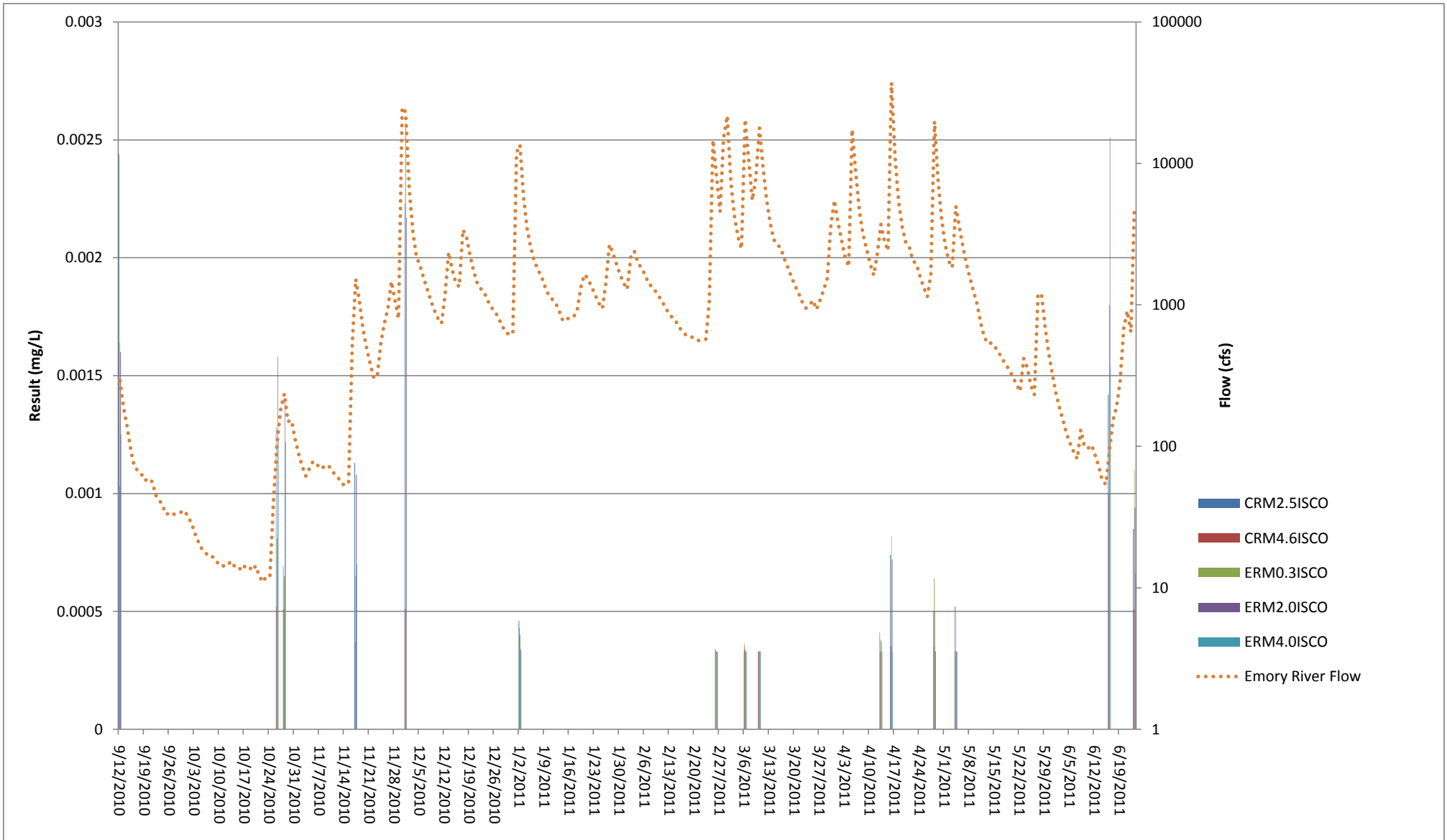
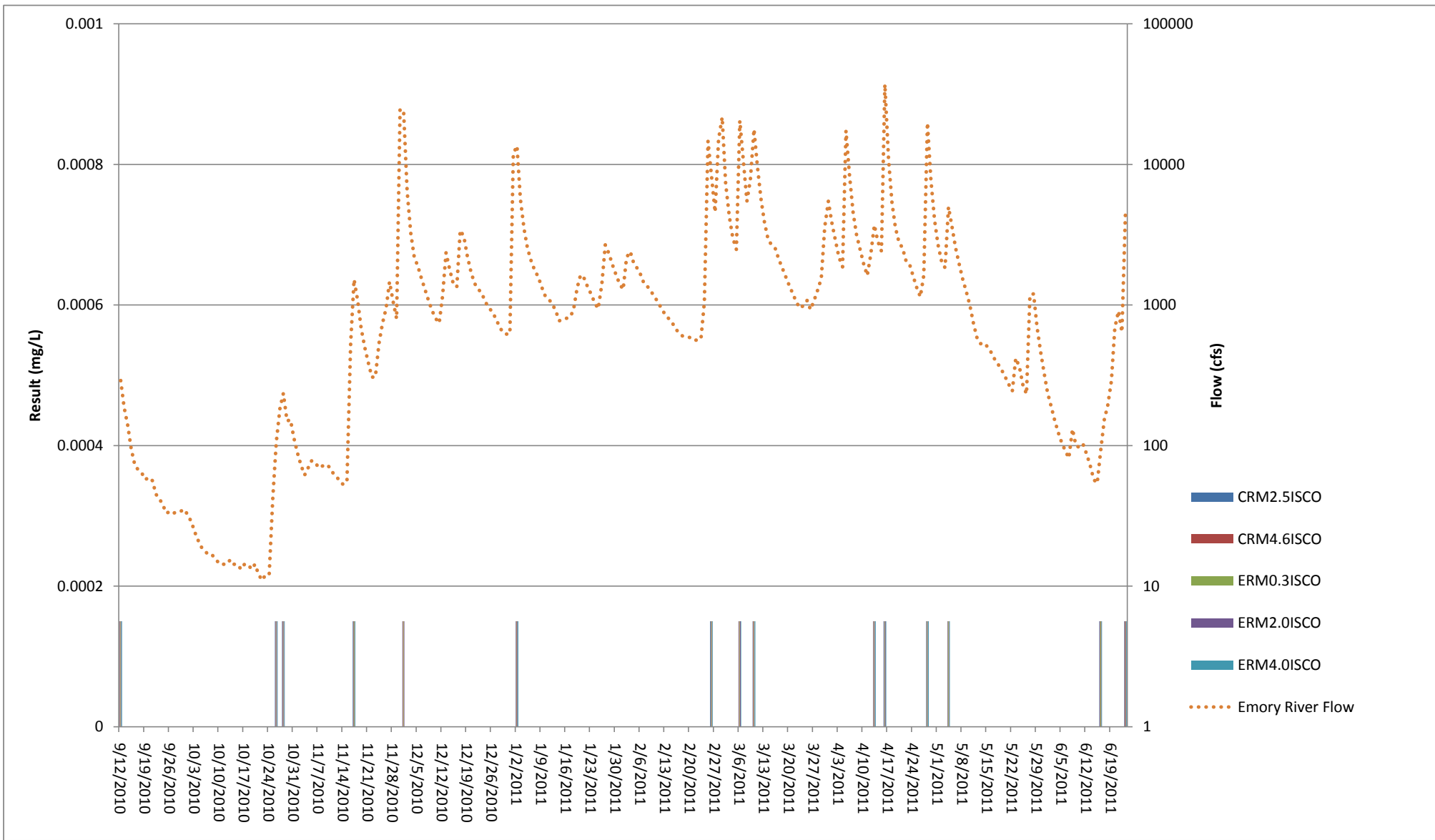
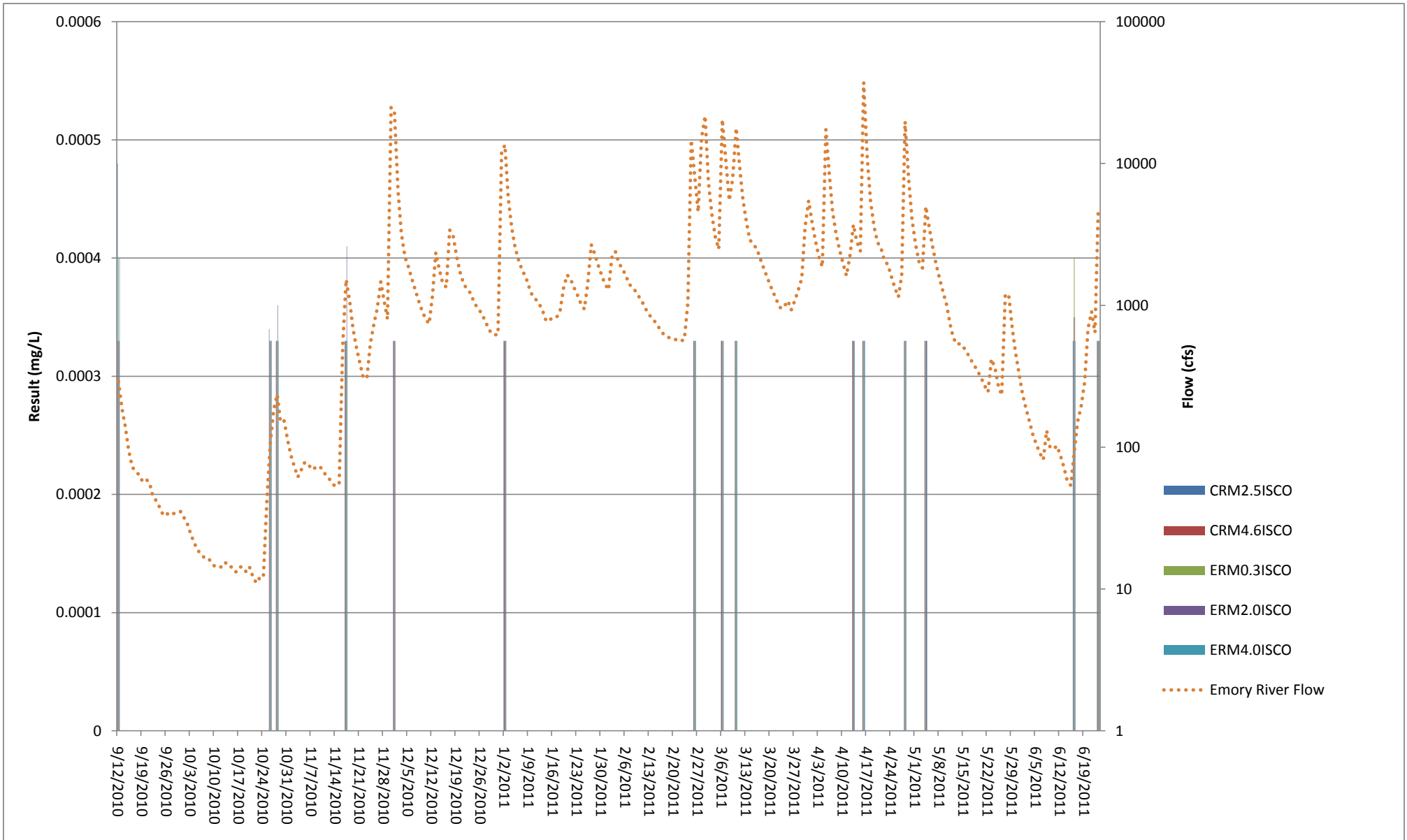


Figure 3a
Dissolved Mercury From all Standard Stormwater Sampling Locations on the Emory and Clinch Rivers
TVA - Kingston



Results are reported at the lowest concentration that laboratory instruments can reliably measure (detection limit).
 All results are non-detect at the detection limit.

Figure 4a
Dissolved Selenium From all Standard Stormwater Sampling Locations on the Emory and Clinch Rivers
TVA - Kingston



Results are reported at the lowest concentration that laboratory instruments can reliably measure.

Report Generated: 8/10/2011

Figure 2b
Total Arsenic From all Standard Stormwater Sampling Locations on the Emory and Clinch Rivers
TVA - Kingston

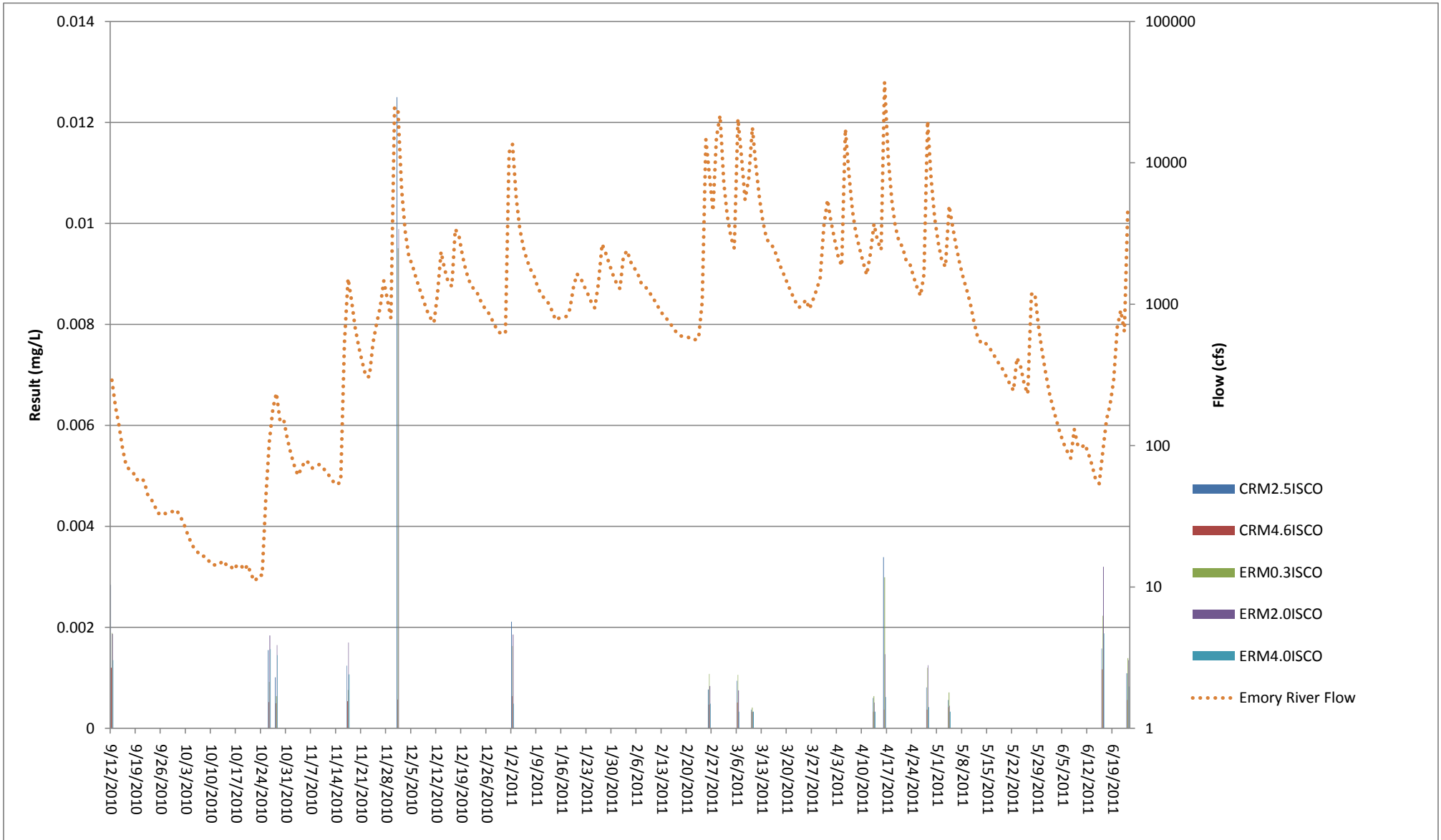
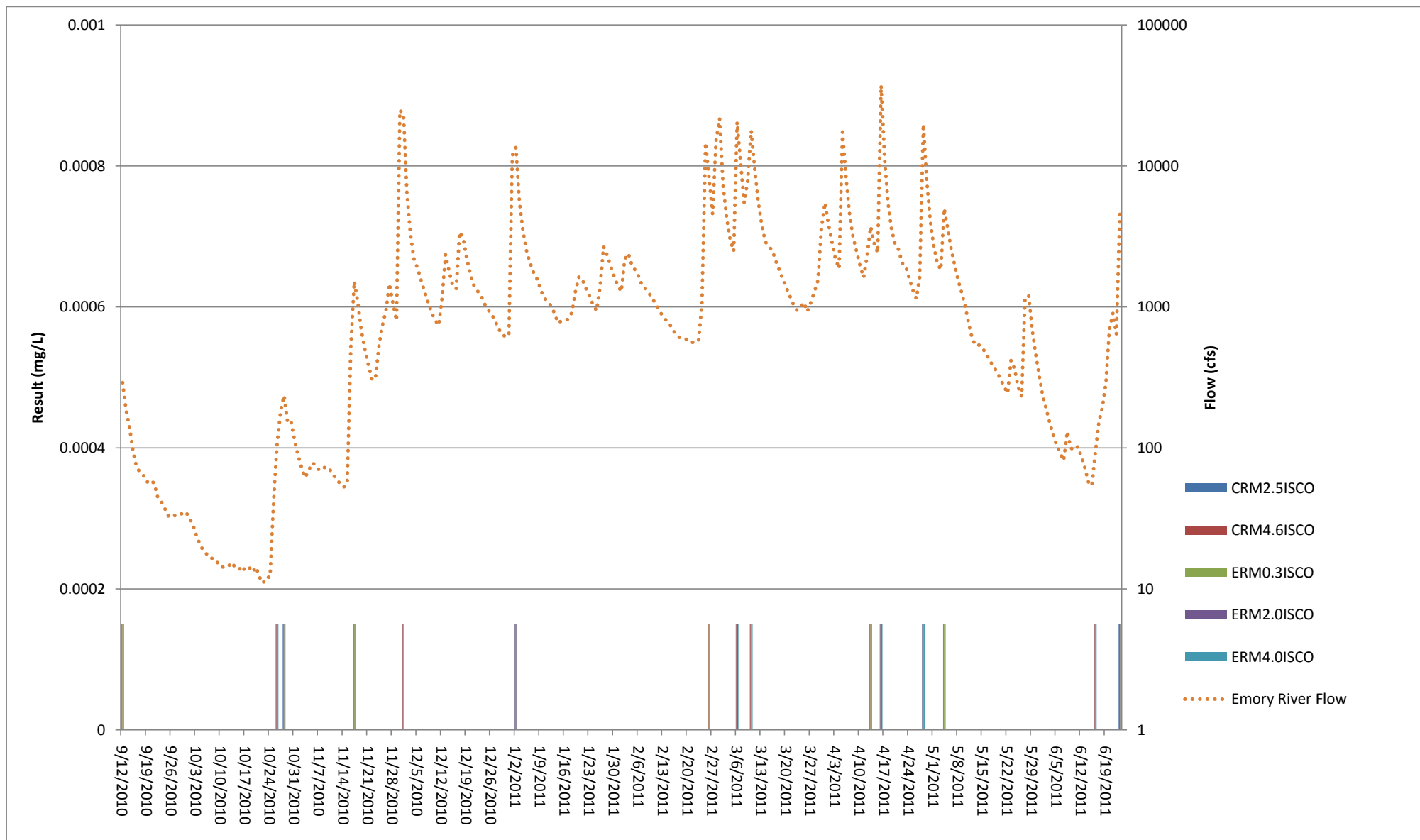


Figure 3b
Total Mercury From all Standard Stormwater Sampling Locations on the Emory and Clinch Rivers
TVA - Kingston



Results are reported at the lowest concentration that laboratory instruments can reliably measure (detection limit).
 All results are non-detect at the detection limit.

Figure 4b
Total Selenium From all Standard Stormwater Sampling Locations on the Emory and Clinch Rivers
TVA - Kingston

